

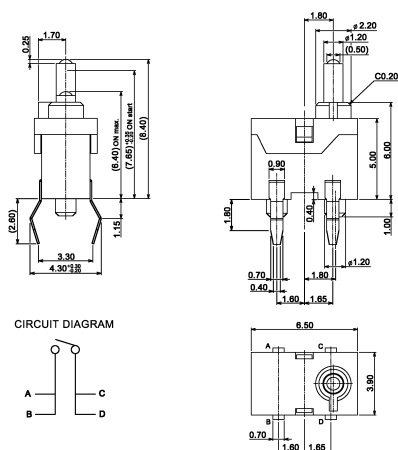
Detector Switches

Specifications:

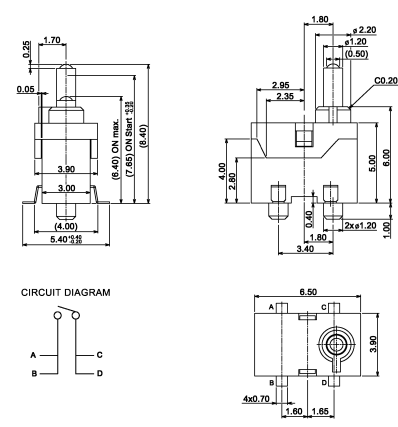
Contact rating:	5V DC, 5 mA
Contact resistance:	< 500 mΩ
Insulation resistance:	> 100 MΩ
Dielectric strength:	250 V, 50 Hz for the duration of 1 minute
Operating temperature:	-20 °C to +70 °C
Operating force:	< 0.35 N
Mechanical life:	minimum 50 000 operations
Material:	Contacts: stainless steel, silver-plated Terminals: phosphor bronze, silver-plated Case and actuator: HTN / LCP, black

Models: Switching functions

DT 101 C-P off – mom



DTS 101 C P-T off – mom



DTS 101 C P T-1 off – mom

